

Mobile Safety Solutions

Product Catalogue : Jan 2009



Mobile Software Systems Ltd. Fairfax House, Audby Lane, Wetherby, LS22 7FD

www.mobilesafetysolutions.co.uk

01937 580019

Contents

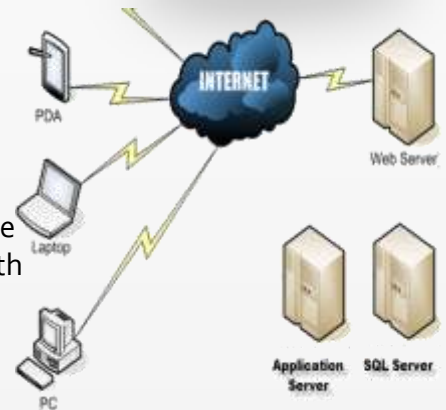
1. Technology Platform
2. Proof of Concept
3. Trial Prices
4. Annual Service Fees
5. Return on Investment
6. Trial Terms and Conditions
7. Functions by Business Sector



Technology Platform

Latest Microsoft .NET technologies have been used to:

- Develop software applications that run on hand held computers (or PDAs). They run user defined questionnaires that can use integrated features such as camera, task management, email and global positioning to assist auditors, inspectors, service workers surveyors and quality managers in carrying out their duties at the workplace.
- Transfer and store the data reliably to a hosted Internet server running a client specific database based on Microsoft SQL Server.
- Use the information collected to ensure that non-compliances, quality defects and work schedules are dealt with swiftly and efficiently. This is done by using due diligence and workflow processes that communicate automatically with company employees, suppliers, subcontractors, and other third parties.
- Generate stylish reports that can be output in various formats (HTML, PDF, Excel, XML) and integrated with the majority of corporate databases easily and at low cost. Reports can be automatically distributed and viewed as HTML pages, from any browser, anywhere in the world.



Technical:

The PDAs have been developed using Mobile Visual Basic.net and Mobile SQL Server CE Edition

Synchronisation uses SQL Server database replication using either broadband, WiFi, or USB connection

The Web Site has been developed using ASP.net

The SQL database application server uses Visual C#.net

Reports are generated using SQL Server 2005 Reporting Services

Proof of Concept



A trial of the system is often required to prove that its use will save you money and have a return on investment. It will allow us to show you how easy the system is to use, and give us the opportunity to help define the optimum way that it should be set up for efficient business process and reporting structure.

What's included:

- Loan of PDA – 42 days including insurance. PDA with Windows Mobile 6 using a standard Mobile Safety Solution release.
- GPRS connectivity and O2 tariff for up to 15Mb of data transfer
- Access license to Mobile Safety Back Office database for questionnaire set up, action planning and reporting.
- Basic Training (1/2 day session)
- Consultancy (1/2 day session)
- Support (telephone support for 42 days)
- A Report to Management describing expected operating costs, recommendations for further use, including any custom developments, reports and integrations.

The screenshots show the 'CONSTRUCTIVE EXPERTISE' questionnaire interface. The top section is titled 'Audit Summary: 10011' and includes fields for Location, Project, Address, and Audit No. Below this is a 'Section Tree' with a tree view on the left and a list of questions on the right. The questions include:

- Do you have a policy of using the audit?
- Is the Time Manual entered? (For Audit?)
- Are there adequate escape routes and are they kept clear?
- Are fire alarms tested regularly (or LPS)?
- Are valid times and creating published in these areas?
- Are there adequate provisions for the removal of water? (in a normal case)?

The bottom section shows 'Audits Analysis' with a pie chart and a line graph. The pie chart shows the following data:

Category	Percentage
10011 - 23	37.5%
10012 - 10	25.0%
10013 - 38	37.5%

The line graph shows 'Percentage' on the y-axis (0 to 80) and 'Audits' on the x-axis (10011 to 10013). The legend indicates '10011 - 23' (blue line), '10012 - 10' (green line), and '10013 - 38' (purple line).

Trial Prices

Prices:

5 PDAs / 6 weeks £2000

3 PDAs / 6 weeks £1000

1 PDA / 6 weeks £500

Trial Prices are based on a shared Microsoft SQL-Server database used with other triallists.

Use of confidential information is not recommended however your data will be secure and subject to a non-disclosure agreement if required.

No reliance should be placed on the trial data and the information is not transferrable after completion of the trial except at extra cost.



Annual Service Fees

Software as a Service (SaaS) principles have been adopted for design and delivery of the Mobile Safety service. Pricing therefore includes:

- *Secure hosted database with security up to banking standards (SSL) and firewall protected.*
- *Guaranteed Service Levels exceeding 99.9% availability 24x7*
- *All licences required including Microsoft server licences.*

*Note that prices do not include:
PDA purchase and data transfer.*



Licence per annum	Consultants Edition	Enterprise Edition
Database One instance of the database	£1500	£5000
Users (each) Each named user including both PDA and Browser access to the database	£695	£995
Browser Users (each) Each named browser user who needs to access the database	n/a	£695
Browser Access (each instance) Each time a member of your organisation accesses the database for instance to report an incident or carry out a DSE assessment.	n/a	£10
What's Included in the licence		
Inspections, Audits and Surveys	Yes	Yes
Basic Reporting	Yes	Yes
Roles and Permissions	Yes	Yes
Incident, Accident Reporting and Investigations	No	Yes
Action Planning	Extra	Yes
Risk Management	No	Yes
Display Screen Equipment Surveys	No	Yes
Hierarchical Report Distribution	No	Yes
Data Traffic per Month	100Gb	200Gb
SSL Certificates	Extra	Yes
Hard Disk Space	10Gb	20Gb
Off site backup	Yes	Yes

Return on Investment



Example:

Inspections take 2 ½ Days
Reports take 1 day
Follow up emails and other admin takes 1 day
Total time needed 5 days

Use of PDA saves:

½ day on inspection
1 day on reporting
½ day on admin

Total saving 2 days (40%)

**Cost of Inspector (say) £30,000 pa.
Saving pa. £12000.**

Cost of PDA (on 5 user basis):

- High quality device £ 150 pa.
- GPRS tariff £ 100 pa.
- Share of licence to use £1500/5 + £600 £ 900 pa.
- Total cost per annum per user. £1150 pa.

PAYBACK - Less than 5 weeks

Saving per annum – say £11000

ROI 950%

OTHER BENEFITS:

- React to Issues rapidly
- Corrective and Preventative Actions
- Promotes better coordination and efficiency
- Increases visibility and monitoring
- Devolves health and safety ownership

Trial Terms and Conditions



Confidentiality and Non-Disclosure Agreement

Client will not copy or reproduce "Mobile Safety" and / or associated software or documentation without permission and respect of the rights of Mobile Software Systems Ltd. (MSS) to copyright and intellectual property ownership. MSS will respect clients rights of confidentiality in relation to their data and other company information not already in the public domain.

At the end of the trial period, each party in this agreement agrees to destroy all associated software documentation and confidential data in its possession if so requested by the other party in writing.

Term

This contract for trial expires after 42 days from initial set up date, or as varied by mutual agreement. All equipment provided under the agreement will be returned in good working order by the client to MSS. In the event of client agreeing to take up further services from MSS, then the equipment may at the discretion of MSS be retained by the client. Any damaged goods will be repaired or replaced by the client prior to return. MSS reserves the right to charge rental at the prevailing rate in this agreement where equipment is not returned on time, until such time it is returned.

Excludes Development

Trial prices quoted exclude any development costs of any new functionality. New functionality requirements as identified in a trial period will be quoted for in the form of an additional cost at the end of the trial period.

Includes Customisation

Trial prices include set up and basic personalisation of the system.

Includes GPRS data connection

Each PDA in the agreement is licensed for up to 15Mb of data transfer capacity. Any data transfers exceeding this capacity level will be invoiced to the client at the cost of the service to MSS.

Add-On Functions by Business Sector



Features can be added to any deployment of the solution to make it industry or business specific. The table below shows the main benefits that we believe we can deliver to the various sectors shown.

Business Sector	Catering	Construction	Food / Drinks Supply	Nursing Homes	General Industry	H&S Consultants	Building Management	Transport
Compliance Toolset:								
Action Planning	•	•	•	•	•	•	•	•
Health & Safety Inspections	•	•	•	•	•	•	•	•
Cellar & Kitchen Safety	•		•	•			•	
Environmental Regulation	•	•	•	•	•	•	•	•
Fire Safety	•	•		•	•	•	•	•
Food Safety	•		•	•		•	•	
Chemical Hazards	•	•	•	•	•	•	•	•
Equipment Inspections	•	•	•	•	•		•	•
Product Quality			•		•			
Staff / Site Induction	•	•		•	•			•
Safety Briefings		•		•	•			•
Safety Audits	•	•	•	•	•	•	•	•
Satisfaction Surveys	•		•	•	•			•
Snagging		•			•	•	•	•
Depot & Site Inspections		•	•		•	•	•	
Contract Variations		•			•			